

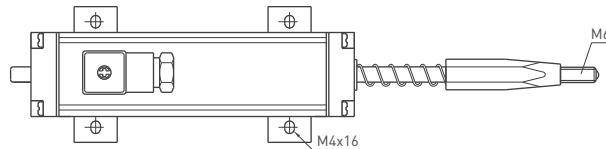
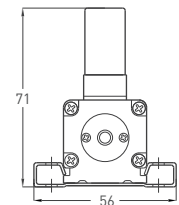
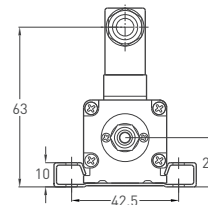
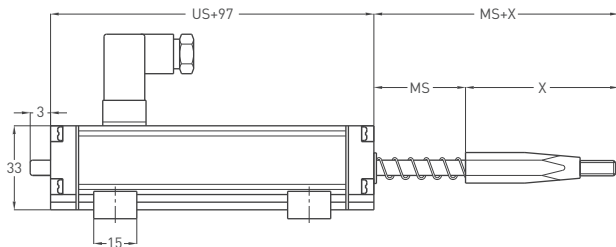
# Linear Potentiometer Spring Return

- Measuring range 30 - 150 mm
- ±%0.1 linearity
- 100 million movements life
- <0.01 mm repeatability
- Infinite resolution

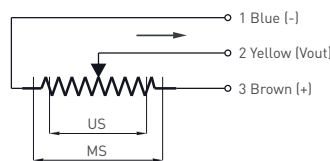
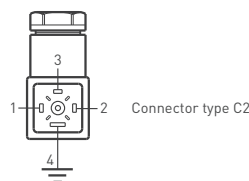


Technical Specifications	
Measurement stroke	30 - 150 mm
Linearity	±%0.1 (150-200 mm), ±%0.2 (75-129 mm), ±%0.5 (<75 mm)
Repeatability	< 0.01 mm
Resolution	Infinite
Resistance	5 kOhm : 30 - 150 mm
Resistance tolerance	± %20
Load resistance	100 kOhm min.
Recommended wiper current	<1 µA
Permissible applied voltage	28 VDC max.
Electrical connections	4 pin hydraulic type connector
Displacement speed	< 5 m/s
Mechanical life	100 million movement
Case diameter	33 mm x 33 mm
Case material	Anodized aluminium
Rod material	Stainless steel
Rod diameter	Ø6 mm
Mechanical fixing	Variable brackets
Protection level	IP 54
Operating temperature	-20°C ... +80°C
Storage temperature	-30°C ... +90°C

## Mechanical Specifications



	LPS 30	LPS 50	LPS 75	LPS 100	LPS 150
X	63 mm	68 mm	78 mm	88 mm	108 mm



RTM (mm)	30	50	75	100	125	150
US (Usefull stroke)	30	50	75	100	125	150
MS (Mechanical stroke)	34	54	79	104	129	154
L (Total length)	227	272	332	392	452	512

## Ordering Procedure

Model	Measurement stroke (mm)	Linearity (%)	Resistance (kOhm)	Connector
LPS	100	D	5K	C2
LPS	30 - 150 mm	A : ±%0.5 (<75 mm), B : ±%0.2 (75-129 mm), C : ±%0.1 (150-200 mm)	5 kOhm : 30 - 150 mm	C2 : 4 pin connector

Please note: The specifications and information in this datasheet may not cover all special demands arising from specific applications. Therefore, they do not constitute a comprehensive description of the product properties. OPKON accepts no responsibility for damages resulting from the improper application of our products. The user is responsible for ensuring that the products used are suitable for their own application.