

Hitachi Compact PLC

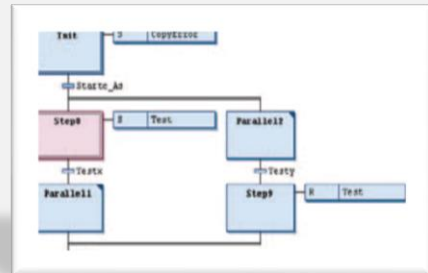
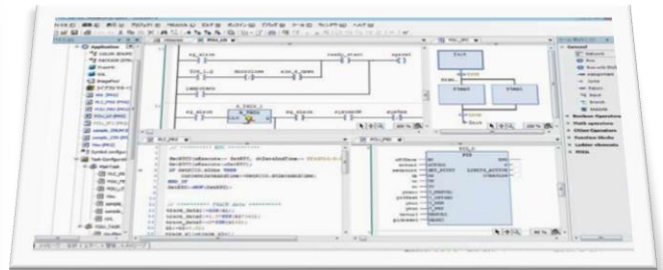
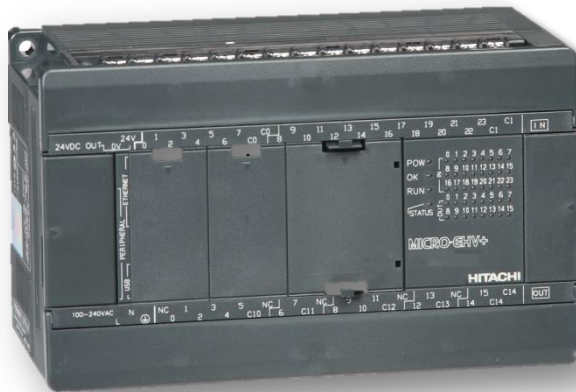
MICRO-EHV+

20 points for machine control

IEC 61131-3 Compliant Programmable Logic Controller



CODESYS



Main Feature



Full IEC compliant 3S CODESYS V3.5 platform

Standardized programming style with 5 programming languages (LD, FBD, IL, ST, SFC)

CODESYS

<p>LD Ladder Diagram</p>	<p>FBD Function Block Diagram</p>	<p>IL Instruction List</p> <pre>LD SFac ST SOURCE_2B ANDC M0 CALL SOURCE1 PT=K1.2 ST=K1000.1 LD SOURCE1_Q ST SOURCE_2B</pre>	<p>ST Structured Text</p> <pre> 1 R := 0 ; 2 R1 := FALSE; PT := T#0.1; 3 R1 := TRUE; 4 FOR I := 0 TO count DO 5 MOVE R1_TO(I); 6 END FOR 7 IF VALUE < T#0 8 MOVE VALUE := 0; 9 VALUE := VALUE + 1; 10 END_MOVE; 11 END_IF; 12 END_IF;</pre>	<p>SFC Sequential Function Chart</p>
-------------------------------------	--	---	--	---

- No proprietary programming languages
- Easy start-up for users with;
 - No PLC experience or
 - Experience of other manufacturer's programming language or
 - Experience of high level programming languages
- Variable names for PLC, HMI, SCADA, and other I/O devices can be consolidated.
- Features Offline simulation function

Powerful communication performance in one CPU

All models have Ethernet, serial, USB (host & device) communication ports as standard.

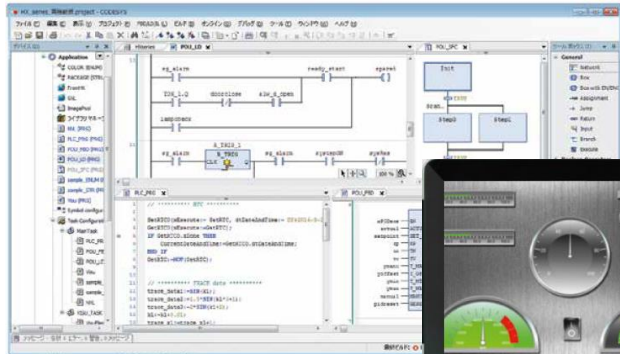
Additional communication ports can be realized by option boards.

Unique Web Functionality

- Visualization over Internet / Intranet
- Web Server is adopted as standard
- JavaScript Execution

HX-CODESYS

Hitachi version of CODESYS by 3S-Smart Software Solutions GmbH



Products lineup

20 points type

◆ DC Model

MV-D20DTPS



DC power supply (24V)
DC input 12 points
TR output 8 points (source)
with short circuit protection

MV-D20DR



DC power supply (24V)
DC input 12 points
RY output 8 points

◆ AC Model

MV-A20DR

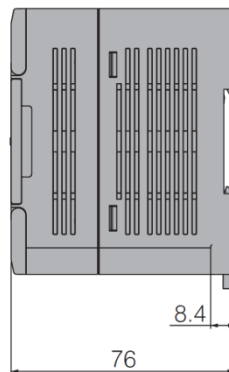
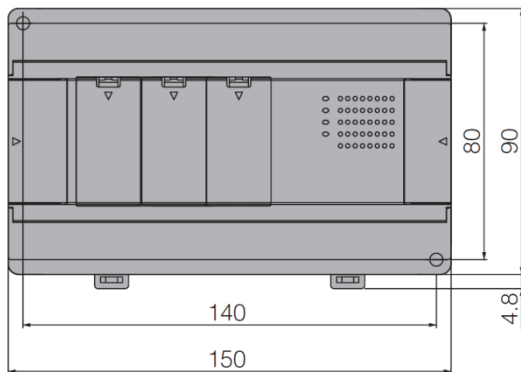


AC power supply (100/200V)
DC input 12 points
RY output 8 points

Specifications

Item		MV-A20DR	MV-D20DR	MV-D20DTPS
Power supply		100 / 240 V AC	24 V DC	
Number of input (DI)		12		
Input specification		DC input (24 V DC)		
Number of output (DO)		8		
Output specification		Relay		Transistor
No. of expansion unit		4		
No. of I/O		276 (input 172 / output 104)		
Boolean executive speed		0.54 μ s / instruction		
User program memory		1 MB		
Source file memory		1 MB		
Data memory (non-retain)		640 kB		
Data memory (retain)		256 kB		
Programming languages		IEC 61131-3 compliant, 5 languages (LD, FBD, SFC, IL, ST)		
Special I/O	Single phase counter	Maximum 5 ch, 100 kHz		
	2-phase counter	Maximum 2 ch, 60 kHz		
	Pulse train output	Maximum 3 ch, 65 kHz		
	PWM output	Maximum 3 ch, 65 kHz		
	Interrupt input	Maximum 5 ch		
I/O updating cycle		Refresh processing (depends on each task cycle)		
USB	Device function	Programming (built-in USB 2.0, full speed)		
	Host function	USB stick (up to 32 GB) can be used for project copies and data logging		
Ethernet	UDP/ IP, TCP/ IP	Programming, General purpose, Modbus/TCP client and server, EtherCAT master		
Serial	RS-232C (built-in)	General purpose, Modbus/RTU master and slave		
	RS-485 (option)	General purpose, Modbus/RTU master and slave		
Web visualization function		Supported as standard		
RTC		Built-in		
Battery		Optional (MV-BAT: 3.0 V / 1.750 mAh)		
Certifications		CE		
Programming software		HX-CODESYS		

Dimensions



Real Overview



[Unit : mm]

Item	MV-A20DR	MV-D20DR	MV-D20DTPS
Size (W x H x D)	150 x 90 x 76		

Product Overview in Industrial IoT Solution

■ Programmable Logic Controller (PLC)



PAC System / HX-Series



Module Type - EH-150 EHV / EHV+



Compact Type - MICRO-EH / EHV / EHV+

■ HMI

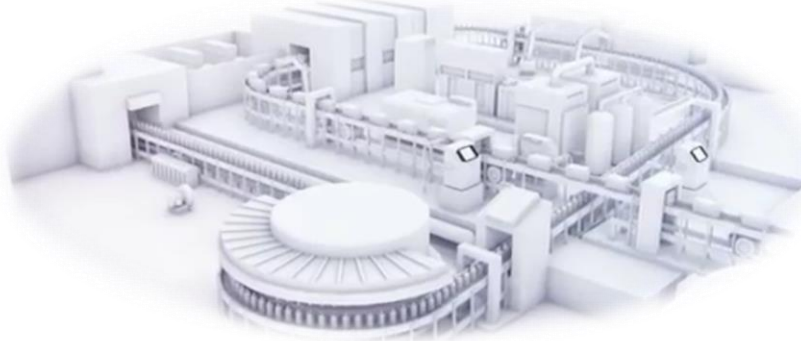


Text Display : EH-TD10A

Operator Panel : EH-OP05

Touch-panel Monochrome : EH-TP05

Color touch-panel : EH-TP504 / 507 / 510 / 513 / 515



■ Remote I/O Module (Slice I/O Module)



- Fieldbus Modules
- I/O Modules
- Analog Modules
- Special function Modules

■ Variable Frequency Drive (Inverter)



WJ200



WL200



SJ700 / 700B



SJ-P1

■ AC Servo Motor



HTW-Series

 **Hitachi Industrial Equipment Systems Co., Ltd.**

International Sales Dept / Component Sales Div
Global Sales Operation Group

For further information, please contact your nearest sales representative.

 **Hitachi Europe GmbH**

Niederlassener Lohweg 191, 40547 Düsseldorf
P.O.Box 11 05 36, 40505 Düsseldorf, Germany
Tel.: +49 (0) 211-5283-0 Fax: +49 (0) 211-5283-649
Website : www.hitachi-ds.com
E-mail: info@hitachi-ds.com

Information in this brochure is subject to change without notice.

HIES SX1 Shibuya - PLC001